



SOCKET WELD REMOVAL SYSTEM



A lightweight "Low Clearance Split Frame" socket weld removal system for 1/2" through 2" pipe. The system features a collet clamping design which automatically centers and squares the machine to the pipe.

- ***Interchangeable axial or radial tool slide option for weld removal and / or pipe cutting and beveling.***
- ***Remove weld on fittings and valves without violating the parent metal of the pipe.***
- ***Super compact-only 1-1/2" radial clearance required.***
- ***Fast set up and operation significantly reduce radiation exposure time.***
- ***Collets grip the pipe firmly without marring.***

Reliable Construction

- Low friction, adjustable bearing system spreads load evenly, minimizing wear.
- Tool slide ways hardened and precision ground.
- Laser hardened and ground bearing raceway for long life.
- Solid 4 bolt frame lock ensures machine rigidity.
- Sure grip collet and lock nut design provides exceptional stability plus consistent centering and squaring.
- Hard chrome finish for maximum corrosion resistance.
- Starwheel feed system for both axial and radial tool slides.

Fast Set Up and Use

- Fast set up and use, satisfy **ALARA** requirements.
- Collet lock nut firmly secures collets and machine frame to pipe with provided spanner wrench.
- Captivated bolts eliminate loss and minimize set up time.
- Multi-position bayonet motor mount for convenient position adjustment.
- Quick tool bit insertion and adjustment.
- Set up, operate and complete cut in 5 min.
- Easily handled and operated with gloves.
- Remote operation.

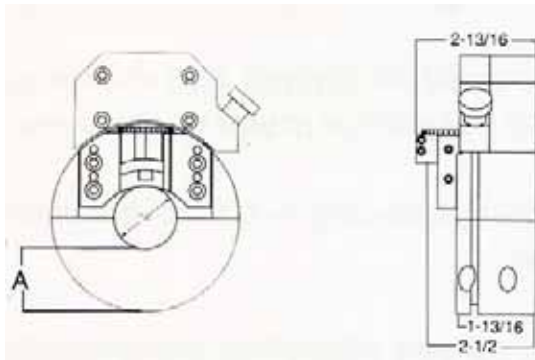


SOCKET WELD REMOVAL SYSTEM

- 1/2" TO 1" frame assembly
- Collets for 1/2", 3/4" and 1" pipe
- 1-1/4" to 2" frame assembly
- Collets for 1-1/4", 1-1/2" and 2" pipe
- One air motor
- Operating tools
- Wachs socket weld tooling
- Operating manual
- Molded plastic carrying case



SPECIFICATIONS



Radial Tool Slide cuts directly down on the weld and requires less axial clearance. Also capable of parting and beveling pipe.

RADIAL TOOL SLIDE AND SOCKET WELD FRAME ASSEMBLY SPECIFICATIONS

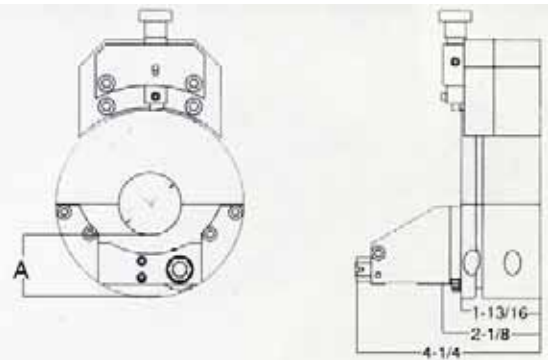
	SW 1/2 to 1" Frame	SW 1-1/4 to 2" Frame
"A" Dimension	1.44"	2.5"
Radial Clearance (over max. dia.)	1.50"	1.50"
Weight	5 lbs.	7 lbs.
Maximum socket diameter	2.25"	3.31"
Tool Stroke	.44"	.44"

System Capacity: 1" Machine: 1/2", 3/4" and 1" pipe, 3000 lbs. and 6000 lbs. sockets.

2" Machine: 1-1/4", 1-1/2", 2" pipe, 3000 lbs. and 6000 lbs. sockets.

System Function: Socket weld removal on most fittings and valves without damage to pipe or socket. when equip with radial slide, the socket weld machine can be used to cut and bevel pipes.

Machine Drive: pneumatic or electric.



Axial Tool Slide cuts across the weld parallel to pipe and will not penetrate the parent metal.

AXIAL TOOL SLIDE AND SOCKET WELD FRAME ASSEMBLY SPECIFICATIONS

	SW 1/2 to 1" Frame	SW 1-1/4 to 2" Frame
"A" Dimension	1.44"	2.5"
Radial Clearance (over max. dia.)	1.50"	1.50"
Weight	5 lbs.	7 lbs.
Maximum socket diameter	2.25"	3.31"
Tool Stroke	.75"	.75"

Air Requirements: 35 cfm @ 90 psi

Electric Requirements: 110 volts

Feed Method: Star wheel

Feed Rate: Fixed @ .0015 per revolution

Finish: Hard chrome coating

Tooling: Axial or radial socket weld removal tooling. Cut/bevel tooling. Heavy duty molded carry case.

Packaging: Option Choice

Standard Equipment:

- Radial or axial tools slide assembly complete with trip
- Right angle electric drive adaptor



E.H. Wachs Company
100 Shepard St. Wheeling, IL 60090 • (847) 537-8800 (847) 520-4711
wachsco.com



Quality Certification
Bureau Inc.
ISO 9001:2000
Registered QMS